

## DESCRIPTION

Social Butterflies is a unique program that was developed via collaboration between Speech-Language Pathologists and Occupational Therapists at Play & Say to support early learner's speech, language, social-emotional and motor skill development by engaging them in cognitively-, and physically-stimulating learning activities.

## Social Butterflies will explore learning topics including:

- Early Literacy & Math Concepts
- Critical Thinking Skills
- Sensory Integration
- Vocabulary Enrichment
- Social-Emotional Skill Development
- Working & Auditory Memory
- Articulation & Phonology
- Fine & Gross Motor Skill Development



## SOCIAL BUTTERFLIES PROGRAM



## Program Structure

- 3-year-old enrichment program
- 5:2 student-to-adult ratio
- 1:1 support is provided by a licensed Speech-Language Pathologist to facilitate individual goals



(718) 921 - 5437



7617 Third Avenue  
Brooklyn, NY 11209



[learn@playandsayspeechservices.com](mailto:learn@playandsayspeechservices.com)

## 3 YEAR OLD PROGRAM

[www.playandsayspeechservices.com](http://www.playandsayspeechservices.com)

## The Importance of Social Groups

Language groups provide real social situations to enhance the production of speech and language patterns. Current research on service delivery models provides evidence that individual practice of speech and language patterns is not sufficient enough to promote generalization and use of those patterns in real interpersonal exchanges. Therefore, these group therapy sessions provide the ideal forum for children to practice and carryover developing communication skills.



## How we can meet YOUR CHILD'S goals

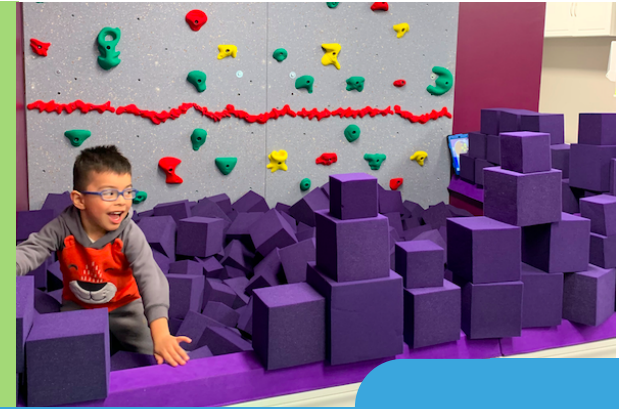
With a **maximum of 5 children** in our Social Butterflies program, the activities chosen for your child are customized to ensure that we address the individual needs of every child. Daily group activities will help facilitate your child's communication, language, and motor skills and help them to expand these skills.

*"Play is fundamentally important for learning 21st century skills such as problem solving, collaboration, and creativity."*

- American Academy of Pediatrics

## Why Social Butterflies over other early childhood programs?

In their early years, children are typically still developing their speech, language, fine & gross motor skills. Our innovative program will help support your child's growth during this critical development process. Our specially-trained staff and therapists will provide a fun, interactive, and engaging experience for your child by utilizing numerous modalities (auditory, visual, physical movement, kinesthetic) to keep them engaged.



## Social Butterflies Schedule

- Our Social Butterflies schedule is subject to change each semester. Please call or email us for the current class schedule.

## Sample Schedule

- Exploration of Play & Learning Possibilities
- Circle Time/Welcome Song
- Read Aloud
- Arts & Crafts
- Snack (provided)
- Exploration of Play, Sensory Integration & Learning Possibilities + Small Group Socialization Activities
- Circle Time/Goodbye Song

## Tuition & Registration

- **Registration Fee (waived for returning families)**
  - \$20/child; \$15/per child for siblings
- **Rates**
  - Full tuition is divided into 2 payments
  - Please see "Tuition and Payment Schedule"